

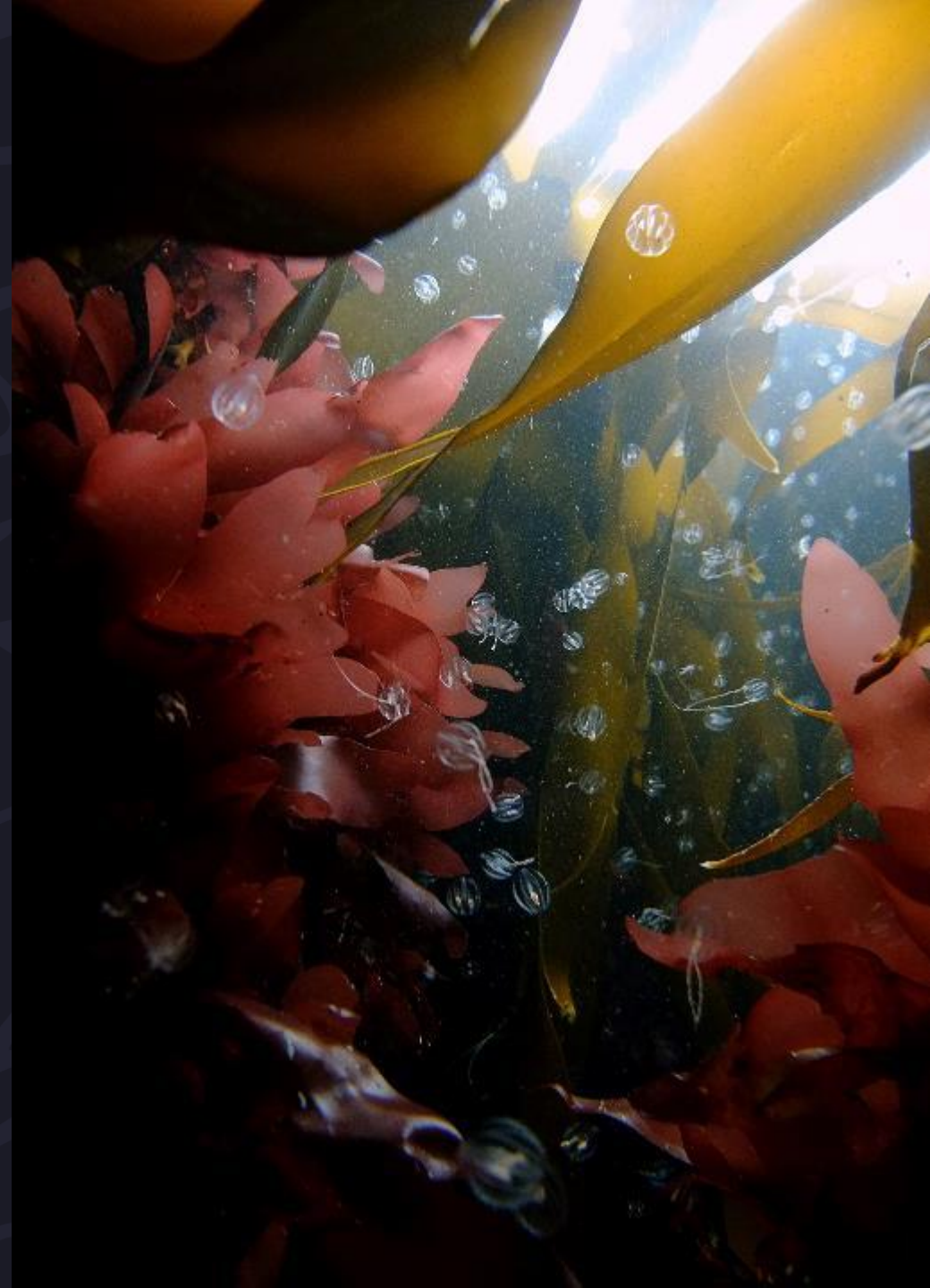
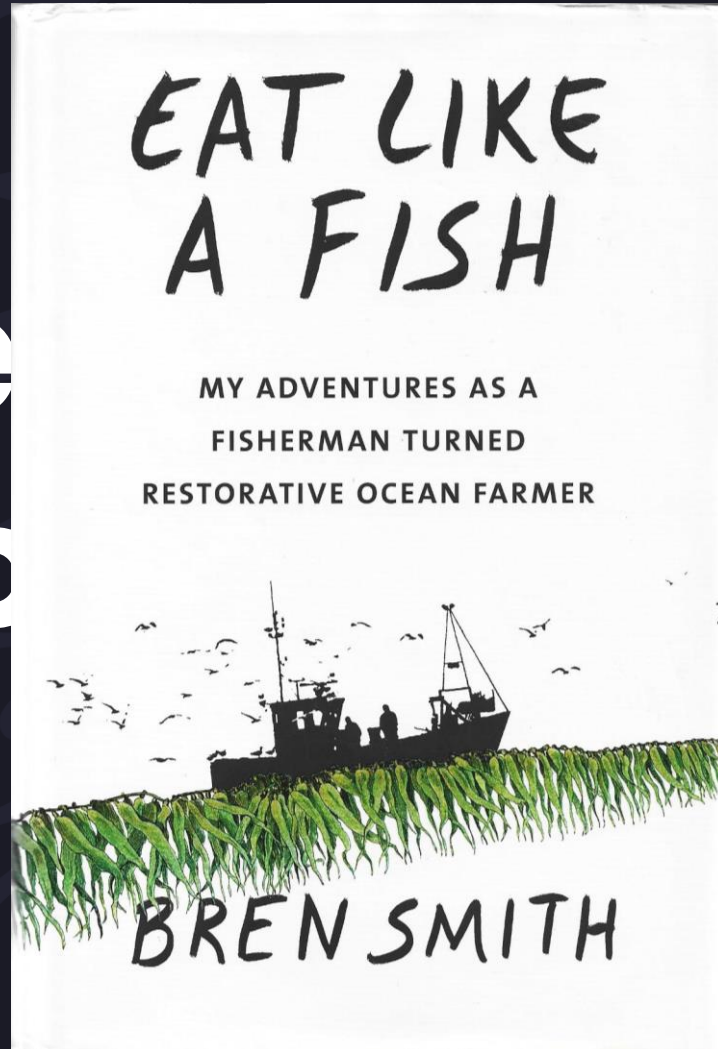
**Environmentally
responsible seaweed
production and wild
harvest**

**Dawn Purchase
Aquaculture Programme
Manager**



Seaweed Revolution

Se
Go



Possible ecosystem services and negative environmental effects associated with seaweed aquaculture in coastal environments

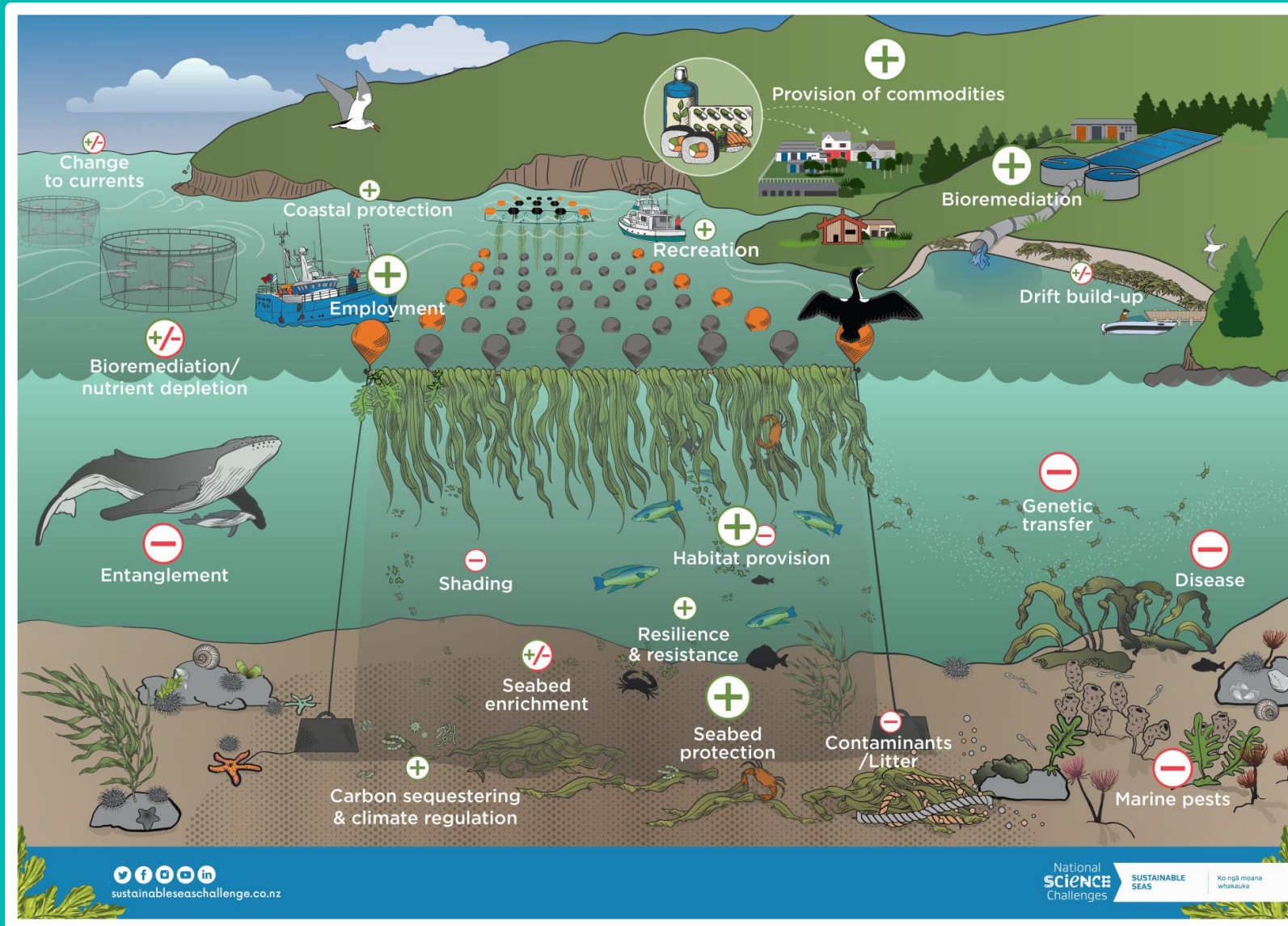


Image source: <https://www.sustainableseaschallenge.co.nz/assets/dms/Other-docs/ES-and-environmental-effects-of-seaweed-aq/ES-environmental-effects-seaweed-aq-coast.jpg>

Developed by the **Marine Conservation Society** – **MCS** and the **Sustainable Inshore Fisheries Trust** – **SIFT**

Published July 2023

Available online at: [Guidelines for Environmentally Responsible Seaweed Cultivation and Harvest in the UK](#)

MARINE
CONSERVATION
SOCIETY

SIFT
Sustainable Inshore Fisheries Trust

**Guidelines for
environmentally
responsible seaweed
cultivation and wild
harvesting in the UK**

Guideline Aims

- Provide guidance for early start up seaweed farmers and harvesters to facilitate responsible development
- Identify and plan for any potential environment concerns and solutions
- Signpost sources of further information
- Help industry gain a social license
- Help to overcome the difficulties experienced in salmon farming
- Outline joint position on environmental best practice for seaweed culture and harvest



Headings and Topics

Seaweed cultivation

- Consultation and Licensing
- Principle ecosystem issues
- Additional environmental management measures

Seaweed Wild Harvesting

- Permissions and licensing
- Principle ecosystem issues

Seaweed cultivation Consultation and licensing

Topic	Guidance	Further guidance
Pre-consultation	Developers should contact the licensing authority before the formal application is made, to make themselves known to MMO/NRW/NatureScot. This will allow them to obtain informal advice on what their application should include.	
Consultation	Developers must carry out a pre-application stakeholder consultation. This should include an inclusive public consultation event, which has been widely pre-notified. Developers should also provide details of the location, nature and scale of the proposals, along with their contact details. Consultation should extend beyond statutory consultees and include other stakeholders embracing commercial fisheries, recreational marine users, environmental NGOs and local communities.	A review of the regulatory regime for seaweed harvesting and cultivation https://sift.scot/wp-content/uploads/2021/05/SIFT-SeaweedRegulatory_Review-Inmara_v1.pdf Seaweed cultivation in Scotland - a guide for community participation https://sift.scot/wp-content/uploads/2021/03/SIFT-Seaweed-Guide.pdf
Environmental impact assessments	Developers must carry out Environmental Impact Assessments in order to identify environmentally suitable sites for development.	EIA regulations. Scotland: https://www.gov.scot/policies/environmental-assessment/environmental-impact-assessment-eia/ England: https://www.gov.uk/guidance/environmental-impact-assessment Wales: https://senedd.wales/laid%20documents/sub-ld11027/sub-ld11027-e.pdf Northern Ireland: https://www.daera-ni.gov.uk/articles/environmental-impact-assessment-eia
Benthic surveying	Developers should carry out comprehensive benthic surveys in advance of the planning or licence application process. Surveys should be undertaken for all sizes of proposed development and take into account potential future expansion of a site, or its cumulative impacts resulting from proximity to neighbouring developments.	Seaweed Cultivation Policy Statement https://www.gov.scot/binaries/content/documents/govscot/publications/speech-statement/2017/03/seaweed-cultivation-policy-statement-2017/documents/00515518-pdf/00515518-pdf/govscot%3Adocument/00515518.pdf

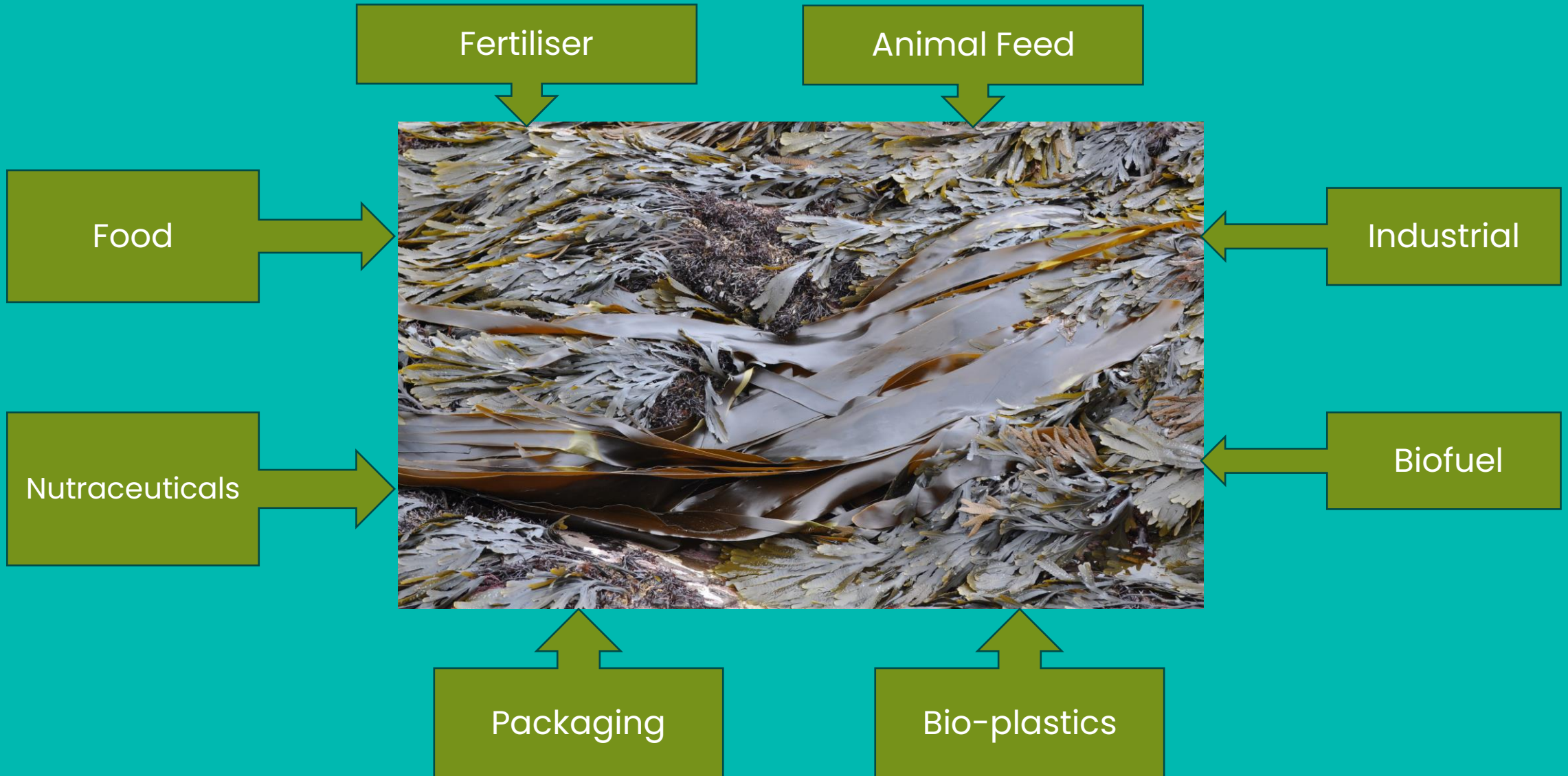
An outline of the regulatory bodies of the UK and the regulations around seaweed cultivation in the UK

- Authority for spatial planning
- Regulator for spatial planning
- Statutory consultees and potentially involved regulators
- Location suitability

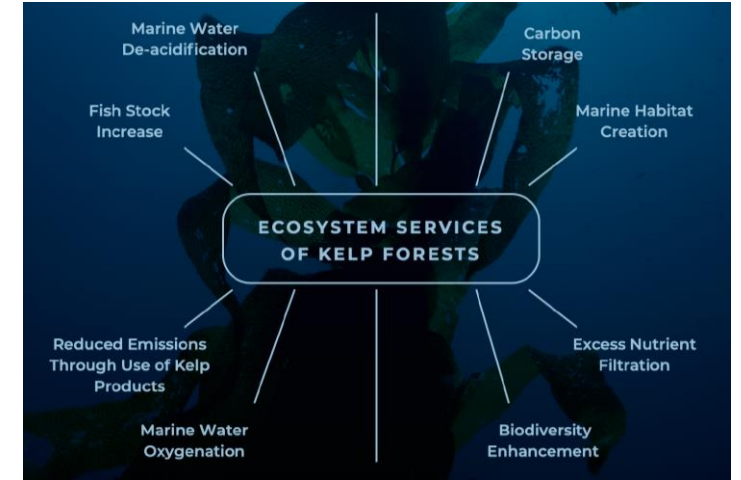
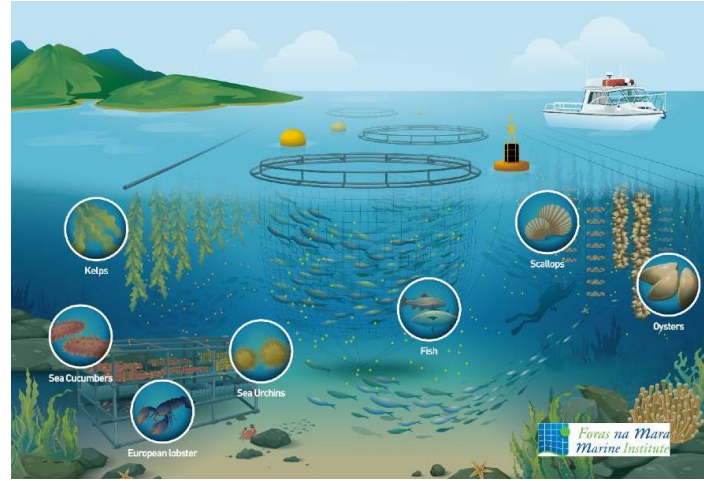
An outline of the regulatory bodies of the UK and regulations around seaweed cultivation in the UK

	Scotland	England	Wales	Northern Ireland
Authority for spatial planning for seaweed farming	<p>The Crown Estate Scotland</p> <p>Within 12 nautical miles you are required to apply for a seabed lease of foreshore/ seabed. If privately owned, leased from a private landowner.</p> <p>The application should specify the coordinates of the area proposed for development, along with:</p> <ul style="list-style-type: none"> • description of the cultivation equipment; • A decommissioning strategy; • A business plan. <p>Lease Option Agreement is also available if the full licence is yet to be granted.</p> <p>Free for 3 years - £1,000 for a five-year extension following that.</p> <p>Proposal licenced if NatureScot confirms site suitability..</p>	<p>The Crown Estate</p> <p>Within 12 nautical miles you are required to apply for a seabed lease of foreshore/ seabed. If privately owned, then leased from a private landowner.</p> <p>The application should specify the coordinates of the area proposed for development, along with:</p> <ul style="list-style-type: none"> • description of the cultivation equipment; • A decommissioning strategy; • A business plan. <p>There is no application fee but an annual rental may apply.</p> <p>Leasing should also be investigated on a local basis. There is the possibility that some counties may plan to lease whole areas of seabed from Crown Estate and lease areas of them back to businesses.</p> <p>Proposal licenced if Natural England confirms site suitability.</p>	<p>The Crown Estate</p> <p>Within 12 nautical miles you are required to apply for a seabed lease of foreshore/ seabed. If privately owned, then leased from a private landowner.</p> <p>The application should specify the coordinates of the area proposed for development, along with</p> <ul style="list-style-type: none"> • description of the cultivation equipment; • A decommissioning strategy; • A business plan. <p>Lease Option Agreement is also available if the full licence is yet to be granted.</p>	<p>The Crown Estate</p> <p>Within 12 nautical miles you are required to apply for a seabed lease of foreshore/ seabed. If privately owned, then leased from a private landowner.</p> <p>The application should specify the coordinates of the area proposed for development, along with</p> <ul style="list-style-type: none"> • description of the cultivation equipment; • A decommissioning strategy; • A business plan. <p>Lease Option Agreement is also available if the full licence is yet to be granted.</p>

Seaweed potential uses



Future Opportunities



Co-Location

Successful North Sea trials in 2022, but further research needed

[This Photo](#)

[CC BY](#)

Integrated Multi-Trophic Aquaculture

Water body/area level.

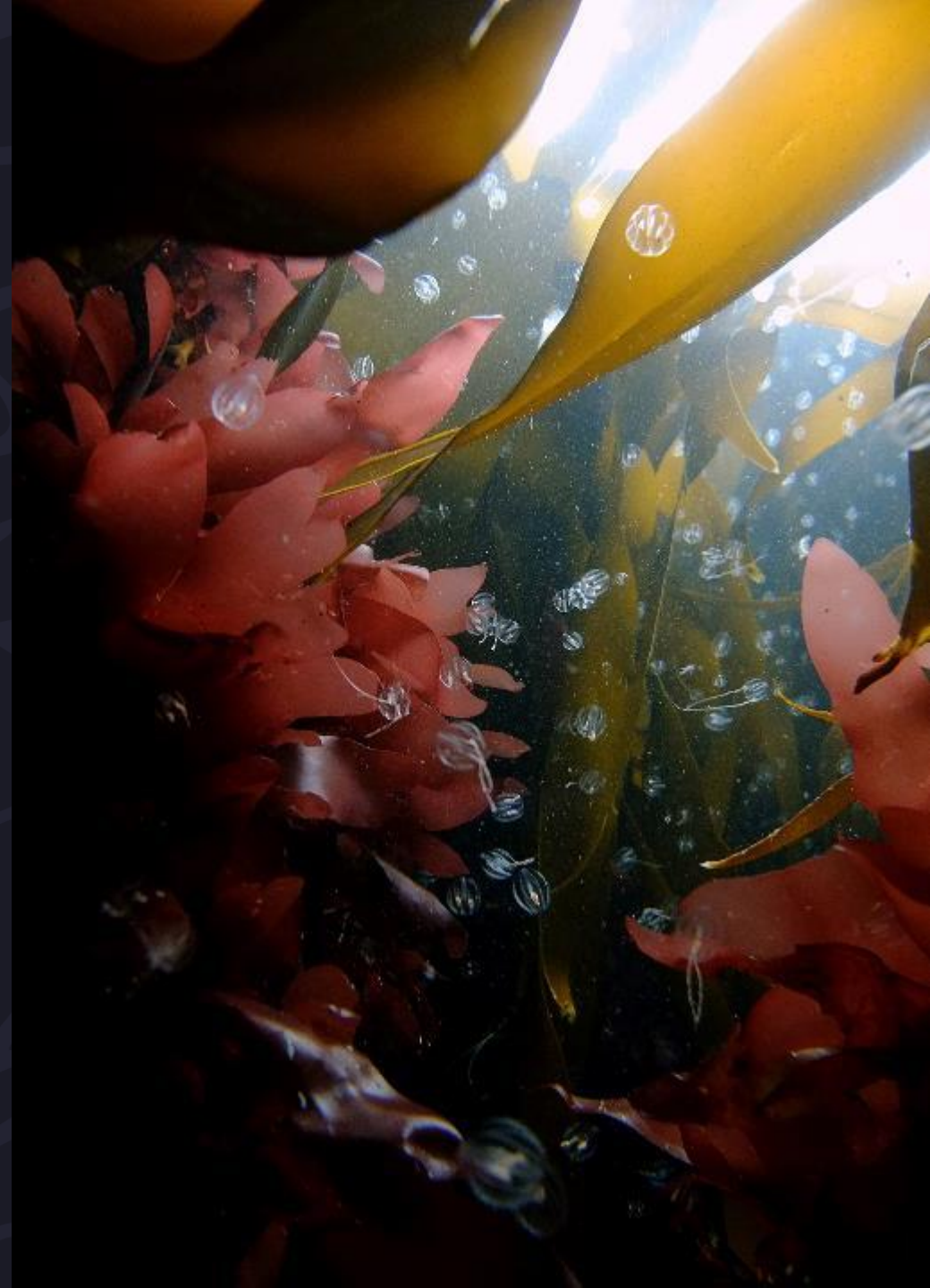
Ecosystem Services

Bioremediation.
Habitat restoration/enhancement

Further Information

[MCS Position Paper on Seaweed](#)

[Seaweed Cultivation – SIFT](#)



Thank you

Dawn.purchase@mcsuk.org

The Marine Conservation Society is a UK-wide community of ocean lovers all working together towards our vision of a sea full of life, where nature flourishes and people thrive.



MARINE
CONSERVATION
SOCIETY

The logo for the Marine Conservation Society is located in the top right corner. It features the organization's name in a bold, black, sans-serif font, stacked in three lines. To the right of the text is a vertical column of five teal-colored circles of varying sizes, arranged in a slightly descending pattern from top to bottom. The logo is set against a white rectangular background.